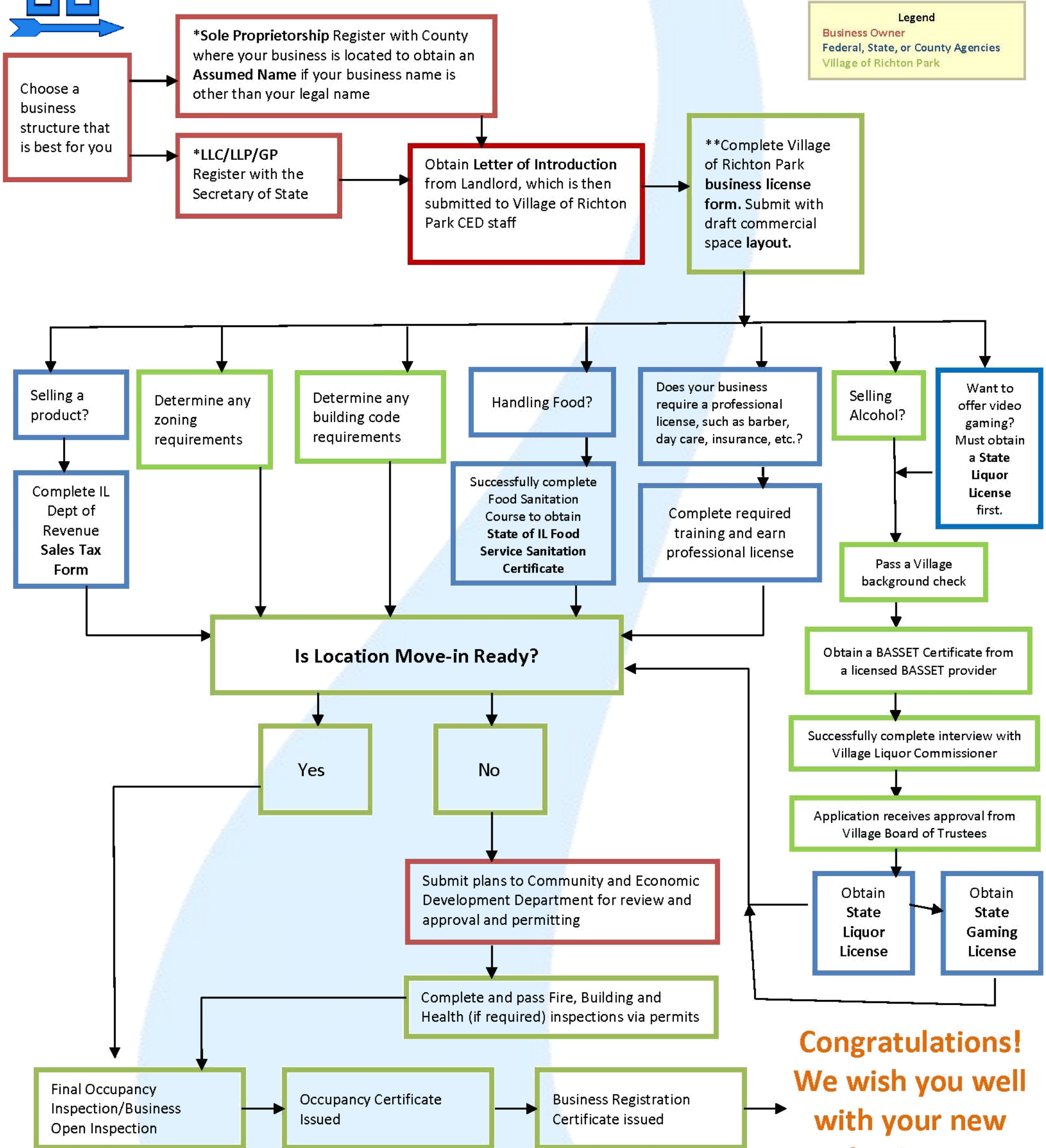


STARTING A COMMERCIAL BUSINESS IN RICHTON PARK



IMPORTANT NOTES

* Secure financing for the business. (It is highly recommended a feasibility study and business plan be completed.)

**If remodeling is required, it is advised a complimentary *Pre-Inspection* be conducted with Village, Landlord and Business to clarify cost and responsibility before Business signs lease.

We encourage you to avoid the temptation of ignoring these regulatory details at the beginning. Doing so may save you time in the short term, but could become a significant obstacle as your business plans develop.